

ORIGINAL INSTRUCTION

GENERAL INSTRUCTION FOR 230V MACHINES

The following will enable you to observe good working practices, keep yourself and fellow workers safe and maintain your tools and equipment in good working order.



WARNING!! KEEP TOOLS AND EQUIPMENT OUT OF REACH OF YOUNG CHILDREN



KEEP WORK AREA AS UNCLUTTERED AS IS PRACTICAL. UNDER NO CIRCUMSTANCES SHOULD CHILDREN BE ALLOWED IN WORK AREAS.

Mains Powered Tools

- The machine is supplied with an attached 16 Amp plug.
- Inspect the cable and plug to ensure that neither are damaged. Repair if necessary by a suitably qualified person.
- Do not use when or where it is liable to get wet.

N.B. This Machine requires a 16amp supply and it's recommended that a C Type breaker is used, if you are unsure please contact a qualified electrician.

Workplace

- Do not use 230V a.c. powered tools anywhere within a site area that is flooded.
- Keep machine clean.
- Leave machine unplugged until work is about to commence.
- Always disconnect by pulling on the plug body and not the cable.
- Carry out a final check e.g. check the cutting tool is securely tightened in the machine and the correct speed and function set.
- Ensure you are comfortable before you start work, balanced, not reaching etc.
- Wear appropriate safety clothing, goggles, gloves, masks etc.
- Wear ear defenders at all times.
- If you have long hair wear a hair net or helmet to prevent it being caught up in the rotating parts of the machine.
- Consideration should be given to the removal of rings and wristwatches.
- Consideration should also be given to non-slip footwear etc.
- If another person is to use the machine, ensure they are suitably qualified to use it.
- Do not use the machine if you are tired or distracted
- Do not use this machine within the designated safety areas of flammable liquid stores or in areas where there may be volatile gases.

SPECIFIC SAFETY FOR DUST EXTRACTORS

Do not use this machine as a vacuum cleaner, try to keep the waste mainly to wood products.

Do not uplift workshop floor debris (stones, nails, screws, paper etc). Be aware that wood dust is an explosive medium.

Do not allow any 'naked light' source to occur anywhere near the machine. This includes cigarettes, matches, etc, and do not place the machine near any unprotected light bulbs, that could possibly get broken.

The suction force is generated by a high speed fan unit. This has the potential to amputate fingers, grab loose clothing (ties etc.) and 'bat' large chips etc, at high speeds. Keep all guarding in place, and if access to the fan becomes necessary (due to blockage etc.) Disconnect the machine from the mains supply and ensure the fan has come to a complete stop before putting your hands anywhere near to it.

If you are not using 'clear' extraction hose, periodically remove the hose to check that the inlet to the machine is not getting restricted. (The safety guard grill of the inlet duct can be particularly irksome in this way, as long strand shavings etc., can wrap around the grill fret.)

Keep the particle filter clean. The machine relies on its ability to 'blow' air through the filter, to generate good suction. If the particle filter starts to clog, this reduces the air flow and hence the machine becomes less efficient.

The particle filter can be cleaned, by using an 'M' class vacuum cleaner, clean the inside of the filter.



**ONLY USE DUST EXTRACTION BAGS
WITH THIS MACHINE NOT DOMESTIC
WASTE BAGS!**



**DO NOT PLACE DUST EXTRACTION
BAGS OVER THE FILTER ASSEMBLY!**

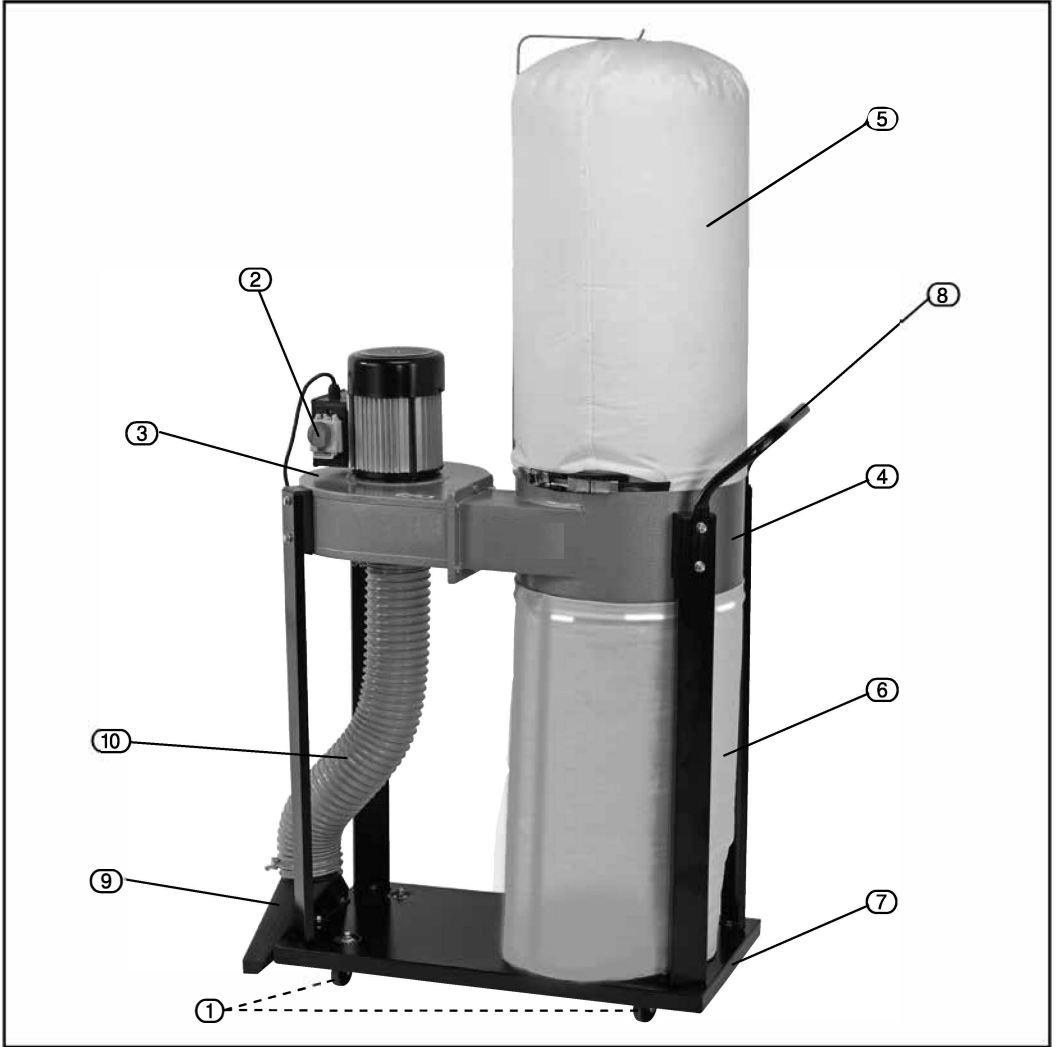
SPECIFICATION

Voltage	230V/50Hz
Motor	750W (1HP)
Capacity.....	55ltr
Air flow.....	14.15m ³ /min (500cfm)
Filtration.....	5 micron
Intake diameter.....	100mm
Bag dimensions.....	370(D) x 640(H) mm
Vibration level.....	<2.5m/s ²
Weight	27kg

HANDLING & STORAGE

- **Care must be taken when handling this product.**
 - Dropping this power tool could have an effect on its efficiency and could also result in personal injury. This product is not a toy and must be respected.
- **Environmental conditions can have a detrimental effect on this product if neglected.**
 - Exposure to damp air can gradually corrode components.
 - If the product is unprotected from dust and debris, components will become clogged.
 - If not cleaned and maintained correctly or regularly, the machine will not perform at its best.

TECHNICAL



① Castors (x4)

② No volt on/off switch

③ Motor/ducting unit

④ Collection bag ducting

⑤ Filter bag

⑥ Collection bag

⑦ Base

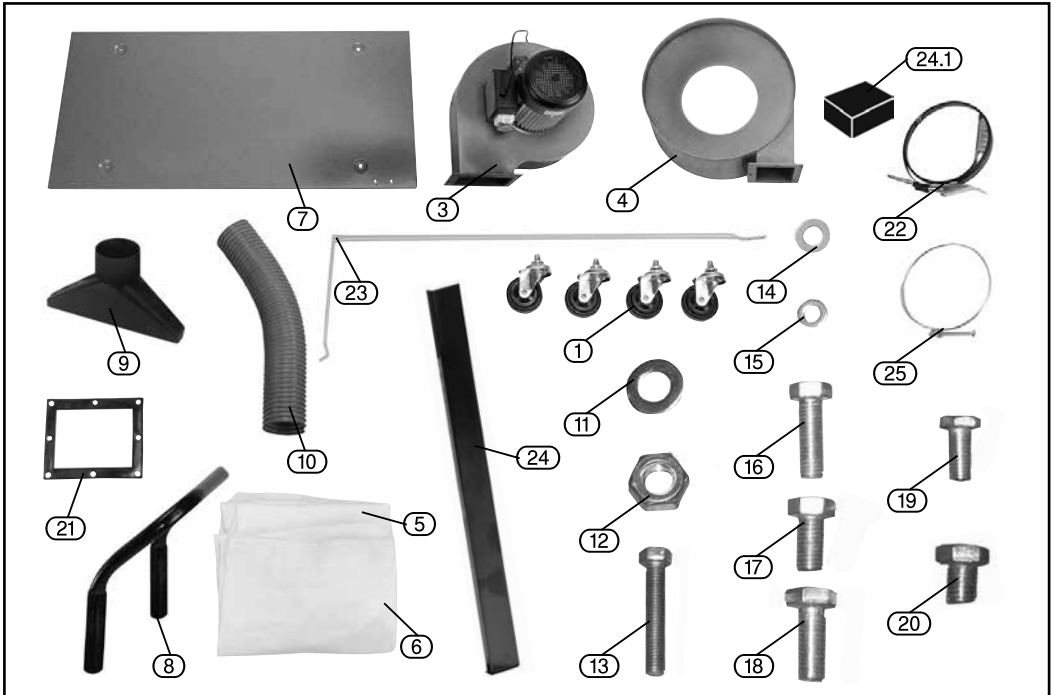
⑧ Handle

⑨ Floor attachment

⑩ Hose

UNPACKING & CHECKING

WHAT'S IN THE BOX



- ① Castors with 8mm screws and 8mm M4 nuts (x4)
- ③ Motor/ducting unit
- ④ Collection bag ducting
- ⑤ Filter bag
- ⑥ Collection bag
- ⑦ Base
- ⑧ Handle
- ⑨ Floor attachment

- ⑩ Hose.
- ⑪ 15 x 8mm Ø flat washers
- ⑫ 4 x M8 nuts
- ⑬ 4 x M8 x 45mm bolts
- ⑭ 6 x 6mm Ø flat washers
- ⑮ 2 x 4mm Ø flat washers
- ⑯ 4 x M8 x 25mm bolts
- ⑰ 2 x M8 x 15mm bolts

- ⑱ 6 x M6 x 15mm bolts
- ⑲ 2 x M4 x 10mm bolts
- ⑳ 4 x M8 x 10mm bolts
- ㉑ Gasket
- ㉒ Straps (x2)
- ㉓ Bag hook
- ㉔ Upright support
- ㉔.1 Spacing block
- ㉕ Hose clamps (x2)

PREPARING THE DUST EXTRACTOR

Note: Remove the plug from the socket before carrying out adjustment, servicing or maintenance.

CASTORS - FIG. 1

Align the castors (1) on the underside of base (7) and secure with the four cross slot machine screws (8mm long), 8mm flat washers (11) and the 8mm (M4) nuts.

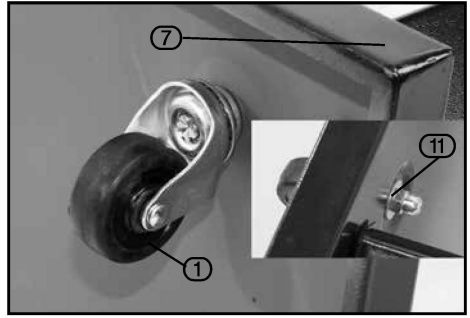


FIG. 1

MOTOR/DUCTING UNIT & COLLECTION BAG DUCTING - FIG. 2

Align the motor/ducting unit (3) with the collection bag ducting (4). Insert gasket (21) between the two ducts before securing with the six (M6 x 15mm) bolts (18).

Note: Ensure there is one washer per bolt.

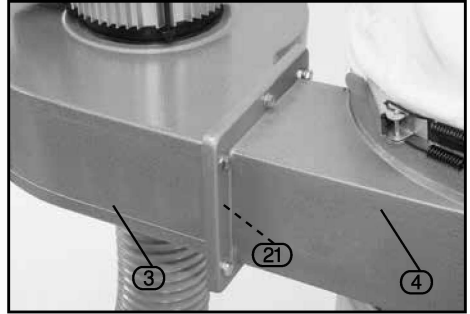


FIG. 2

UPRIGHT SUPPORTS - FIGS. 3 - 4

Pass the two (M8 x 25mm) bolts (16) through the upright support (24). The spacing block (24.1) and secure into the motor/ducting unit (3).

Note: Ensure there is one washer per bolt.

Pass the two (M8 x 45mm) bolts (13) through the handle (8), the upright support (24), the spacing block (24.1) and the collection bag ducting (4) and secure in place with the (M8) nuts (12).

Note: Ensure there are two washers per bolt, one either side of the assembly.

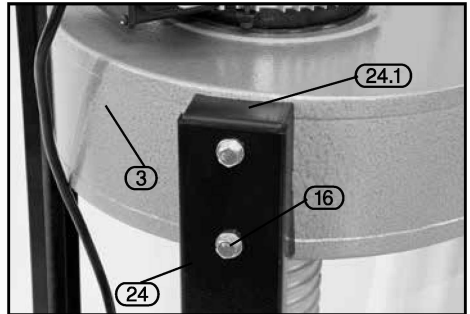


FIG. 3

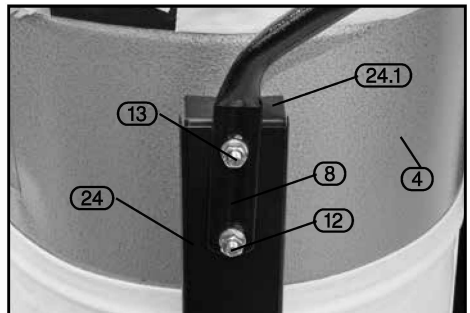


FIG. 4

ASSEMBLY TO BASE- FIG. 5

Position the upright support (24) and the motor/ collection bag ducting assembly (3)/(4) onto the base (7) in line with the remaining holes. Secure to the base with the 13mm (M8x10mm) bolts (20).

Note: Ensure there is one washer per bolt.

UPPER BAG HOOK- FIG. 6

Secure the upper bag hook (23) to the collection bag duct using the two M4 x 10mm bolts (19) and washers.

UPPER & LOWER BAGS- FIG. 7

Position the upper and lower bags (5) and (6) over the collection bag duct aperture (4). Overlap the metal strap (22) and with the clamp (22.1) in the open position, hook the spring over one of the teeth (22.2). Close the clamp (22.1) to secure the bag in place.

Ensure the bag is located fully and is straight to avoid an air gap which will allow dust to escape.

COLLECTION HOSE & FLOOR ATTACHMENT- FIG. 8

Using the hose clamps (25), attach the flexible hose (10) to the outlet on the underside of the motor/ducting unit (3).

Connect the other end to the floor attachment (9).

Secure the floor attachment to the base (7) with the remaining (M8 x 10mm) bolts (20) (as shown in fig. 5).

Note: Ensure there is one washer per bolt.

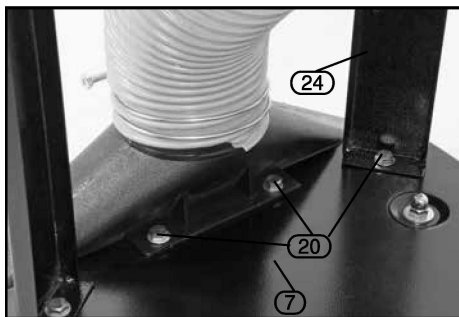


FIG. 5

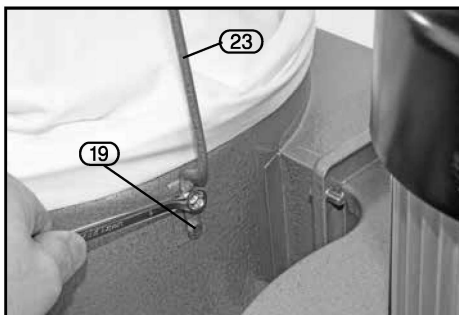


FIG. 6

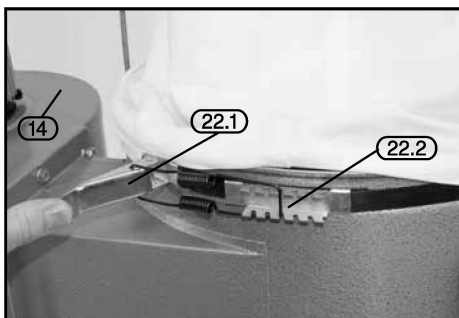


FIG. 7

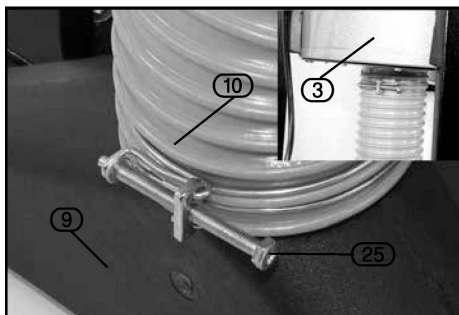


FIG. 8

OPERATING INSTRUCTIONS

NO-VOLT ON/OFF SWITCH – FIG. 9

The dust extractor is equipped with a no-volt on/off switch (2).

In the event of a power supply disruption, the machine will require manually restarting once power has been returned.

To switch the machine on, press the green button marked 'I' (2.1).

To switch the machine off, press the red button marked 'O' (2.2). The yellow cover with integral red stop button (2.3) must be left covering the switches so, in the event of an accident or emergency, striking the stop button will activate the off switch.

IMPORTANT: Always wear an approved dust mask and goggles when operating this machine.

Note: Remove the plug from the socket before carrying out adjustment, servicing or maintenance.

EMPTYING THE COLLECTION BAG

This should be carried out at regular intervals or when the airborne dust content increases.

Depending on the workload, this may be necessary more often.

IMPORTANT: This machine is not suitable for fine dust or hazardous dust such as medium density fibreboard (MDF).

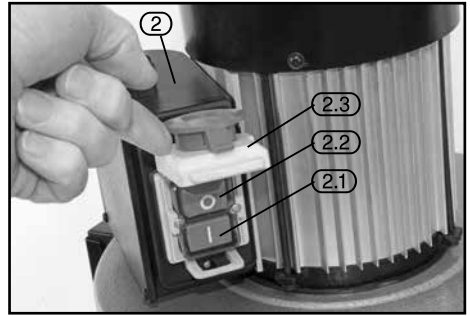


FIG. 9

SYMBOLS



Read the instruction manual.



Wear face mask and safety glasses.



Wear ear defenders.



Wear protective gloves.



Do not abandon into the environment.



Keep out of the reach of children.



Warning!



WEEE – Waste Electrical & Electronic Equipment.

Do not dispose of Waste Electrical & Electronic Equipment in with domestic rubbish.



Continuous A-Weighted Sound Pressure Level.

DISPOSAL

- At the end of the machine's working life, or when it can no longer be repaired, ensure that it is disposed of according to national regulations.
- Contact your local authority for details of collection schemes in your area.

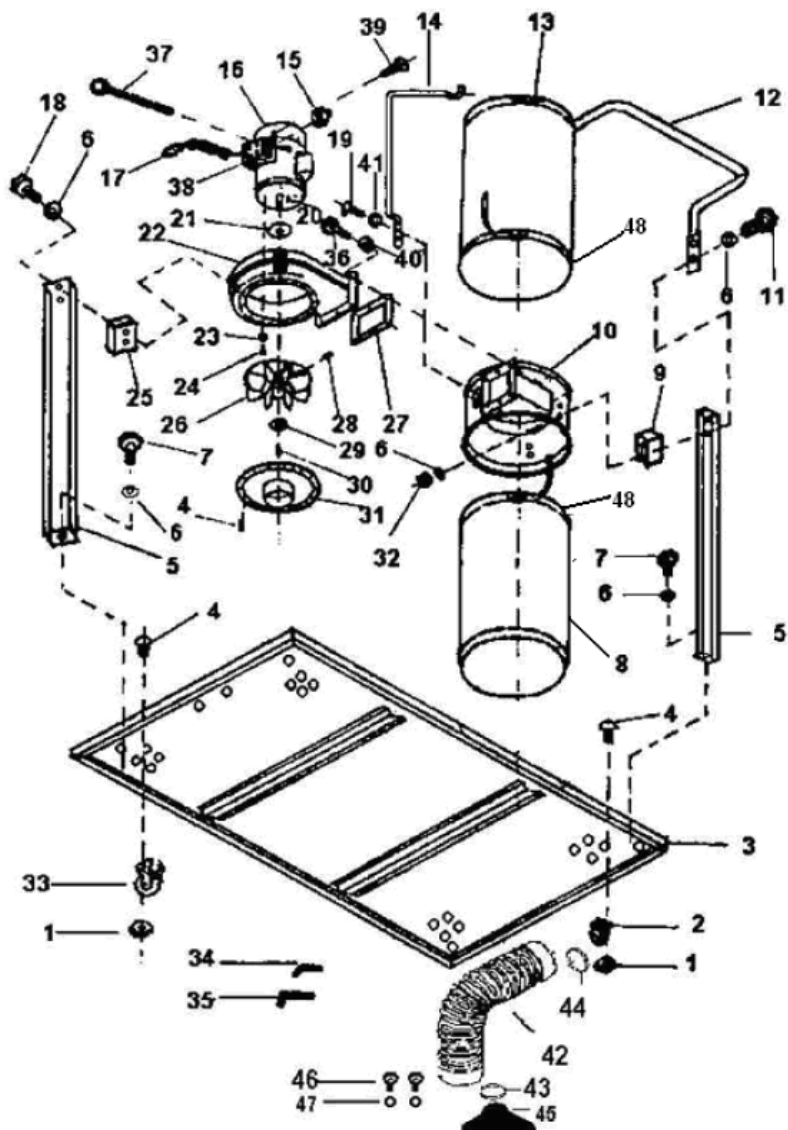
In all circumstances:

- Do not dispose of power tools with domestic waste.
- Do not incinerate.
- Do not dispose of WEEE* as unsorted municipal waste.



* *Waste Electrical & Electronic Equipment.*

DIAGRAM



PARTS LIST

NO	DESCRIPTION	Q'TY	NO	DESCRIPTION	Q'TY
1	Nut	16	25	Block	2
2	Universal Caster	2	26	Turbo Fan	1
3	Base	1	27	Packing	1
4	Screw Pan HD	28	28	Screw Hex HD	1
5	Support Rod	4	29	Washer	1
6	Washer	16	30	Screw Hex Socket	1
7	Screw Hex HD	4	31	Inlet	1
8	Collector Bag	1	32	Nut	4
9	Collector Block	2	33	Directional Castor	2
10	Filtration Housing	1	34	Wrench Hex	1
11	Screw Hex HD	4	35	Wrench Hex	1
12	Handle	1	36	Screw Hex	6
13	Filter Bag	1	37	Screw Pan HD	4
14	Vertical Stand	1	38	Switch Cover	1
15	Switch	1	39	Cross Slot Screw	2
16	Motor	1	40	Washer	6
17	Power Cord	1	41	Washer	2
18	Screw Hex HD	4	42	Hose	1
19	Screw Pan HD	2	43	Hose Clamp	1
20	Key	1	44	Hose Clamp	1
21	Packing	1	45	Floor Sweeper	1
22	Fan Housing	1	46	Bolt	2
23	Spring Washer	4	47	Washer	2
24	Screw Hex HD	4	48	Bag Clamp	2

The Importer:

TOOLSAVE LTD

Unit C, Manders Ind. Est.,
Old Heath Road, Wolverhampton,
WV1 2RP.

Declare that the product:

Designation: Professional Dust Collector

Model: PDC750

Complies with the following Directives:

EN 60335-1:2012+A11

Standards & technical specifications referred to:

EC Council Directive 2006/42/EC Machinery

Report No. 2006/42/EC
 06/42/EC - Annex
 I/05.2006 EN
 62233:2008 E
 N 60335-2-69:2012

Authorised Technical File Holder: Bill Evans

01/01/2025
The Director

